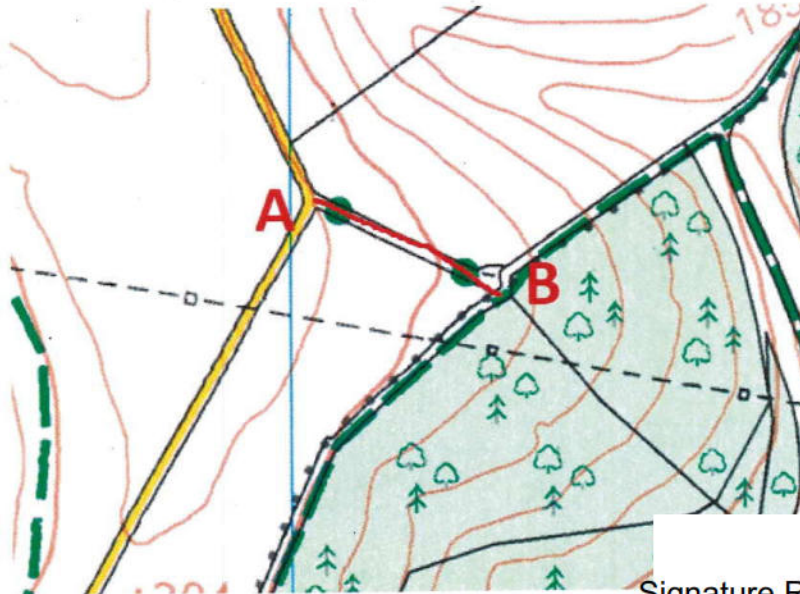


# Wildlife and Countryside Act 1981

## The Definitive Map and Statement of Public Rights of Way in Dorset

Map accompanying the DMMO application to:-

Add a Byway Open to All Traffic for a route in the parish of Litton Cheney from Point A (at approximately SY 5602 9253) at the bend in the public road, eastwards to Point B (at approximately SY 5620 9245) at the junction with definitive bridleway S 28/37 on the parish boundary with Long Bredy to be shown as a Byway Open to All Traffic.



"This copy has been made by or with the authority of Dorset Council pursuant to section 47 of the Copyright, Designs and Patents Act 1988 ("the Act"). Unless the Act provides a relevant exception to copyright, the copy must not be copied without the prior permission of the copyright owner."

Signature Redacted